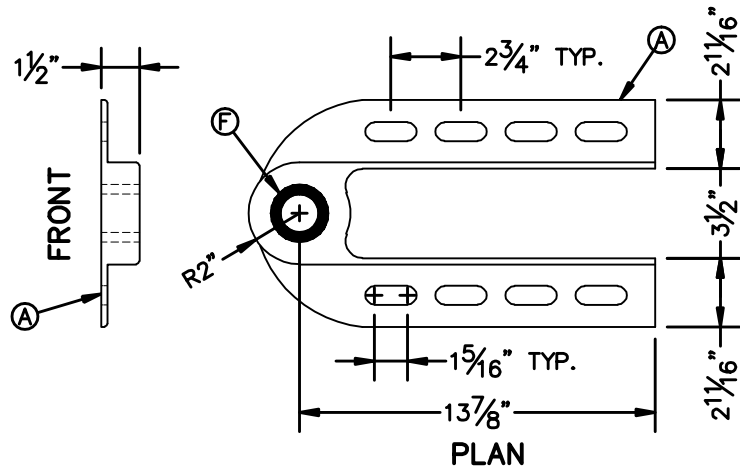
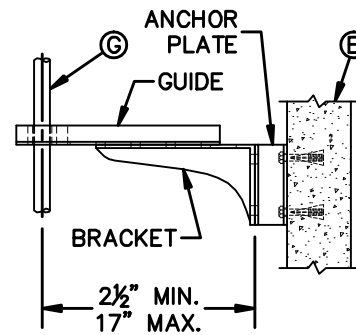


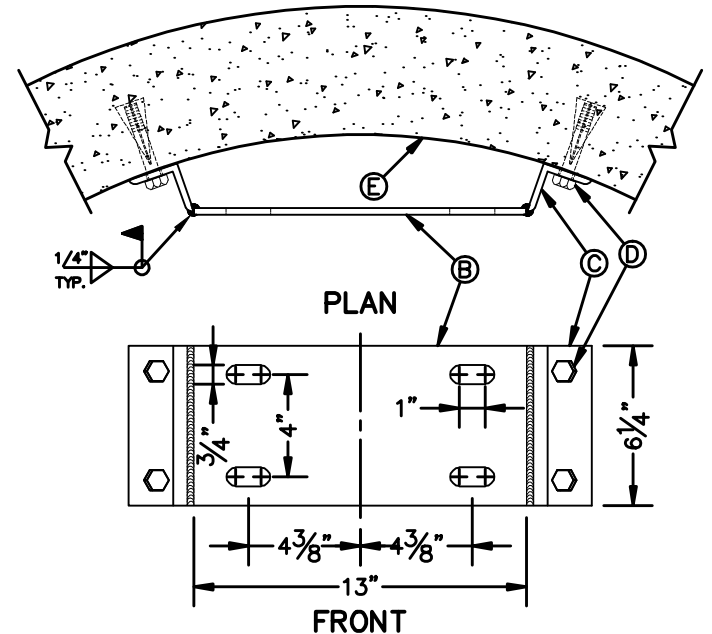
**EXTENSION STEM GUIDE BRACKET**



**EXTENSION STEM GUIDE**



**COMPLETED ASSEMBLY**



**EXTENSION STEM GUIDE  
MANHOLE ANCHOR PLATE**

**GENERAL NOTES:**

1. EXTENSION STEM GUIDE TO BE INSTALLED VERTICALLY ALONG MANHOLE WALL TO SUPPORT EXTENSION STEM.
2. EXTENSION STEM GUIDE TO BE FULLY ADJUSTABLE.
3. INSTALL @ 6' MAX. INTERVALS VERTICAL TO THE INSIDE OF MANHOLE WALL.

**CONSTRUCTION KEY NOTES:**

- A. DUCTILE IRON 65.45.12 MIN.
- B. 6 1/4" X 13" X 1/4" THK. STL. PLATE.
- C. 2" X 2" X 1/4" ANGLE 6 1/4" LONG TYP.
- D. 1/2" DIA. X 3" EXP. BOLT TYP.
- E. MANHOLE WALL.
- F. BRONZE BUSHING.
- G. 1 1/4" DIA. VALVE EXTENSION STEM.



STANDARD  
DETAIL

DATE: 3/1994  
REV: 3/13/2008

EXTENSION STEM GUIDE

N.T.S.

EL PASO **WATER** UTILITIES  
PUBLIC **SERVICE** BOARD

DETAIL No.  
261-3