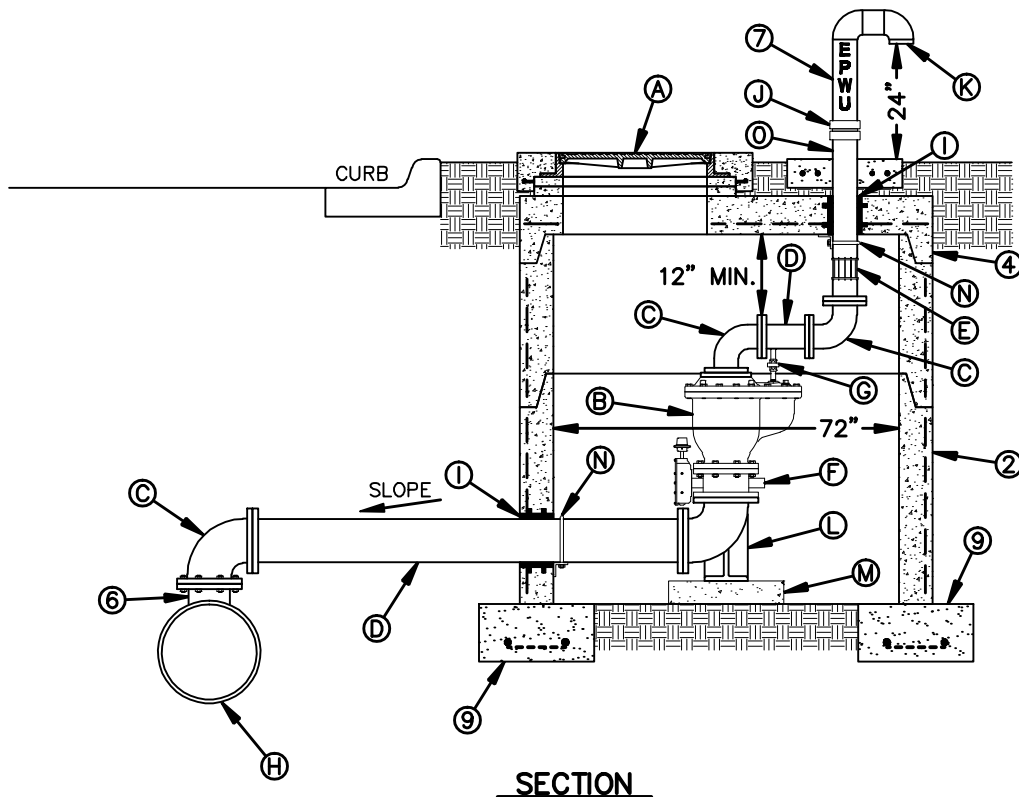


**GENERAL NOTES:**

1. INSTALLATION SHALL GENERALLY BE FOR A MAIN-LINE 20" AND LARGER (6" COMBINATION AIR VALVE SHOWN). INSTALLATION OF OTHER SIZED VALVES IS SIMILAR.
2. PRE-CAST MANHOLE SECTIONS SHALL BE OF REINFORCED CONCRETE CONFORMING TO ASTM C-478 AND SHALL MEET HS-20 LOADING. PROVIDE REINFORCEMENT WITHIN 3" @ OPENINGS OR KNOCKOUTS, OPENINGS (UP TO 8") MADE IN FIELD SHALL BE CORE DRILLED.
3. MANUFACTURER TO PROVIDE LIFTERS OF ADEQUATE SIZE AS NEEDED.
4. ECCENTRIC/CONCENTRIC LID (ECCENTRIC SHOWN), 8" THICK (SEE DETAIL 379-1).
5. VALVE AND PIPE SIZES AS SPECIFIED.
6. WHERE TOP OUTLET FITTING IS NOT PROVIDED BY MANUFACTURER, PROVIDE TAPPING SLEEVE (DRY TAP MAIN LINE) WITH VERTICAL FLANGE TO SIZE OF AIR VALVE.
7. AIR VENT PIPING (SIZE AS REQUIRED PER COMBINATION AIR VALVE) TO BE SCHEDULE 40 WELDED STEEL WITH FORGED STEEL WELD FITTINGS. BURIED VENT PIPING SHALL HAVE 2 COATS OF EPOXY POLYAMIDE COATING. ABOVE GROUND PIPING TO BE PRIMED AND PAINTED BLUE (PURPLE FOR RECLAIMED) WITH A SEMI-GLOSS ENAMEL AND LABELED "EPWU" WITH WHITE LETTERS.
8. AIR VENT PIPING SHALL BE LOCATED CLEAR OF PAVED ROADWAY.
9. 12"x24" FOOTING WITH No.5 REBAR AT 12" ON CENTER EACH WAY IS REQUIRED.

**CONSTRUCTION KEY NOTES:**

- A. MANHOLE RING AND COVER (SEE DETAILS 377 & 378). SET FRAME AND COVER FLUSH WITH ROADWAY SURFACE OR FINISHED GRADE (SEE DETAIL 185).
- B. COMBINATION AIR VALVE, SIZE AS SPECIFIED.
- C. 6" FLANGED 90° BEND.
- D. 6" FLANGED SPOOL.
- E. 6" DRESSER COUPLING (ROMAC 501 OR APPROVED EQUAL).
- F. 6" FLANGED BUTTERFLY VALVE WITH VERTICAL OPERATING NUT.
- G. AIR RELEASE PIPING, SEE DET 263-6.
- H. MAINLINE, SIZE AS SPECIFIED.
- I. PIPE WALL SLEEVE (LINK SEAL OR EQUAL).
- J. BREAK-A-WAY COUPLING, SEE DET 263-5.
- K. INSECT SCREEN.
- L. 6" FLANGED 90° BEND WITH INTEGRATED CAST BASE, BOLTED TO CONCRETE SUPPORT.
- M. VALVES INSTALLED ON NATURAL GROUND WITH CONCRETE SUPPORTS AS REQUIRED.
- N. ANCHOR PIPING TO VALVE VAULT WITH 3"x3"x1/4" ANGLE & 3/8" Ø STRAP.
- O. 4" PLAIN END BY THREADED MALE SCHEDULE 40 STEEL PIPE (GALVANIZED NOT ALLOWED).



**SECTION**



STANDARD  
DETAIL

DATE: 3/1994  
REV: 7/20/2009

COMBINATION AIR RELEASE VALVE FOR LINES  
20" AND LARGER  
BEHIND CURB INSTALLATION

N.T.S.



DETAIL No.  
263-3