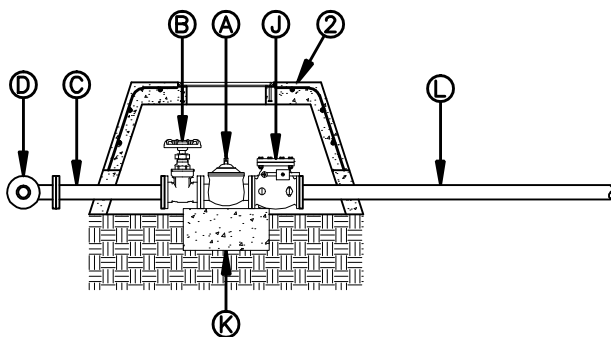


**TOP VIEW**



**SECTION A-A**

**GENERAL NOTES:**

1. INSTALLATION SHOWN FOR A 2" VALVE. INSTALLATION OF OTHER SIZED VALVES IS SIMILAR.
2. VALVE VAULT SHALL BE TYPE "D", SEE DETAIL 294.
3. DISCHARGE TO AN OPEN ATMOSPHERE INCLUDES BUT IS NOT LIMITED TO STORM DRAINS, CULVERTS, AND PONDING AREAS OR ANY APPROVED STRUCTURE/LOCATION.

**CONSTRUCTION KEY NOTES:**

- A. 2" FLANGED PRESSURE RELIEF VALVE.
- B. 2" FLANGED GATE VALVE WITH HANDWHEEL.
- C. 2" FLANGED BRASS SPOOL.
- D. 2" FLANGED BRASS 90° BEND.
- E. 2" COUPLING BRASS.
- F. 2" NIPPLE BRASS.
- G. 2" CORPORATION STOP.
- H. 2" SERVICE SADDLE.
- I. MAINLINE, SIZE AS SPECIFIED.
- J. 2" CHECK VALVE.
- K. VALVES INSTALLED ON NATURAL GROUND WITH CONCRETE SUPPORTS AS REQUIRED.
- L. 2" P.V.C. SCH. 40 DISCHARGE TO ATMOSPHERE (SEE NOTE 3).



STANDARD  
DETAIL

DATE: 8/16/2006  
REV: 3/27/2007

PRESSURE RELIEF 1" AND 2" VALVE  
(DISCHARGE TO ATMOSPHERE)  
BEHIND CURB INSTALLATION

N.T.S.



DETAIL No.  
265-1