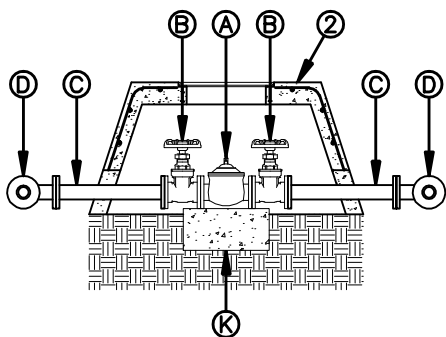


**TOP VIEW**



**SECTION A-A**

**GENERAL NOTES:**

1. INSTALLATION SHOWN FOR A 2" VALVE. INSTALLATION OF OTHER SIZED VALVES IS SIMILAR.
2. VALVE VAULT SHALL BE TYPE "D", SEE DETAIL 294.

**CONSTRUCTION KEY NOTES:**

- A. 2" FLANGED PRESSURE RELIEF VALVE.
- B. 2" FLANGED GATE VALVE WITH HANDWHEEL
- C. 2" FLANGED BRASS SPOOL.
- D. 2" FLANGED BRASS 90° BEND.
- E. 2" COUPLING BRASS.
- F. 2" NIPPLE BRASS.
- G. 2" CORPORATION STOP.
- H. 2" SERVICE SADDLE.
- I. MAINLINE, SIZE AS SPECIFIED.
- J. GATE VALVE (NORMALLY CLOSED) AND BONNET BOX, SIZE AS SPECIFIED.
- K. VALVES INSTALLED ON NATURAL GROUND WITH CONCRETE SUPPORTS AS REQUIRED.



STANDARD  
DETAIL

DATE: 8/16/2006  
REV: 3/27/2007

PRESSURE RELIEF 1" AND 2" VALVE  
(BACK DISCHARGE TO LOW SIDE)  
BEHIND CURB INSTALLATION

N.T.S.



DETAIL No.  
265-2