

**EL PASO WATER UTILITIES  
SELECTED FINANCIAL AND STATISTICAL DATA  
10 Years**

	2009	2008	2007	2006	2005	2004 Restated	2003 Restated	2002	2001	2000
<b>FINANCIAL DATA*</b>										
Total Revenue	\$165,064,597	\$184,132,520	\$153,870,696	\$145,522,699	\$162,759,681	\$136,040,710	\$114,491,777	\$108,172,868	\$99,320,529	\$113,168,052
Water System Income	84,211,344	82,144,429	76,512,872	70,329,517	75,286,185	68,092,152	55,536,943	50,319,695	48,862,970	47,364,576
Wastewater System Income	51,567,727	50,233,301	46,246,662	45,348,889	43,003,469	44,207,686	40,252,295	38,914,948	35,474,735	36,297,159
Misc. Revenue (Interest, etc.)	29,285,526	51,754,790	31,111,162	29,844,293	44,470,027	23,740,872	18,702,539	18,938,225	14,982,824	29,506,317
Paid to City in Lieu of Taxes	9,613,832	9,301,374	8,601,624	7,980,845	9,330,128	7,782,955	6,164,963	5,742,378	5,525,245	5,861,811
Net Income (Loss)	450,503	15,719,303	1,469,119	4,958,666	36,711,635	16,983,714	2,595,500	(1,792,870)	2,462,131	20,830,980
Water Revenue per Customer	405.71	406.35	391.59	366.59	400.90	371.66	311.03	289.80	288.59	285.77
Wastewater Revenue per Customer	267.52	267.21	255.80	254.99	246.87	261.15	244.61	243.86	229.20	241.93
Number of Employees - Annual Average	799	713	693	708	663	666	652	647	626	629
Expenditures for Plant Additions	\$34,225,806	\$61,843,009	\$110,012,539	\$120,193,891	\$115,683,182	\$91,905,919	\$74,364,347	\$53,576,910	\$55,149,019	\$44,548,410
Bonded Debt	504,971,000	519,273,000	465,542,000	436,375,000	402,017,000	359,719,000	360,052,000	277,753,000	288,987,000	183,276,000
Outstanding Commercial Paper	9,000,000	9,000,000	14,000,000	21,000,000	40,000,000	15,000,000	10,000,000	25,000,000	-	17,000,000
Debt Service Coverage	1.58	1.95	1.61	1.67	2.34	2.23	1.77	1.51	1.86	2.85
<b>FINANCIAL RATIOS*</b>										
Current Ratio (Current Assets/Current Liabilities)	2.58	2.51	1.65	2.02	3.05	1.76	2.98	2.88	3.14	3.38
Acid Test Ratio (Cash & Cash Equivalents/Current Liabilities)	1.75	1.64	1.13	1.55	1.47	1.31	0.17	0.75	1.12	1.59
Operating Ratio (O&M/Total Operating Revenue)	0.59	0.58	0.60	0.61	0.53	0.53	0.60	0.65	0.61	0.57
Net Take-Down Ratio ((Total Operating Revenue-O&M)/Gross Revenue)	0.40	0.41	0.39	0.38	0.40	0.46	0.40	0.33	0.37	0.38
Total Liabilities to Total Assets	0.46	0.46	0.46	0.45	0.46	0.44	0.45	0.40	0.40	0.33
Debt to Equity Ratio (Total Outstanding Debt/Equity)	0.75	0.78	0.74	0.71	0.73	0.68	0.71	0.59	0.60	0.43
Debt Ratio (Total Outstanding Debt/Total Assets)	0.41	0.42	0.40	0.39	0.40	0.38	0.39	0.36	0.36	0.29
Debt Service Safety Margin ((Net Operating Income-Debt Service)/Gross Revenue)	0.13	0.18	0.10	0.11	0.25	0.25	0.16	0.09	0.17	0.24
Restricted Assets/Restricted Liabilities	2.61	2.77	1.74	2.10	3.46	2.93	4.14	3.45	4.31	2.86

\*Fiscal Year March 1 of Year Shown thru February 28 of Following Year.

**EL PASO WATER UTILITIES  
SELECTED FINANCIAL AND STATISTICAL DATA  
WATER AND WASTEWATER UTILITY  
10 Years**

	2010	2009	2008	2007	2006	2005	2004	2003	2002	2001
<b>WATER PRODUCTION AND USAGE DATA*</b>										
Water Customers Retail at End of Year	188,927	185,062	182,315	178,031	174,922	171,607	167,753	162,810	158,764	155,289
Water Customers Retail & Wholesale at End of Year	207,563	202,150	198,390	195,389	191,849	187,794	183,210	178,561	173,633	169,317
Water Pumped - Million Gallons	37,368	37,067	35,319	35,636	35,457	35,173	34,663	36,999	38,462	39,444
Water Metered - Million Gallons - Retail	31,570	31,881	30,481	30,460	30,600	30,510	30,066	31,805	33,391	33,644
Water Metered - Million Gallons - (Retail/Wholesale)	34,407	34,147	32,069	32,664	32,595	32,565	32,042	33,898	35,372	35,387
Percent of Water Billed vs Water Pumped (R/W)	92.1%	92.1%	90.8%	90.6%	91.9%	92.6%	92.4%	91.6%	92.0%	89.7%
Annual Billed Water per Customer Retail -1000 Gallons	167	172	167	171	175	178	179	195	210	217
Annual Billed Water per Customer (R/W) -1000 Gallons	166	169	162	167	170	173	175	190	204	209
Average Daily Water Demand-Million Gallons	102.4	101.6	96.4	97.5	97.0	96.4	95.0	101.7	105.7	108.1
Maximum Daily Water Demand-Million Gallons	158.5	152.6	158.7	154.8	162.7	162.3	156.4	161.8	174.2	167.9
Minimum Daily Water Demand-Million Gallons	62.7	60.7	58.2	59.7	54.6	55.4	60.2	60.9	59.3	60.2
Daily Average Consumption in Peak Week-Million Gallons	147.7	138.7	150.2	138.7	144.0	152.2	141.5	158.2	159.5	167.9
Peak day	June 18	July 14	June 17	June 26	June 21	July 6	June 16	July 23	June 11	June 6
Miles of Water Mains Installed	21.68	28.69	38.84	42.82	22.00	34.10	60.87	49.21	24.28	60.00
Miles of Water Mains Replaced or Abandoned	5.14	7.74	2.94	12.75	2.70	4.05	11.13	7.03	1.67	6.00
Miles of Water Mains in Place	2,505	2,488	2,467	2,432	2,401	2,382	2,352	2,302	2,260	2,238
Number of Fire Hydrants Installed	168	226	287	270	435	152	208	180	254	157
Number of Fire Hydrants in Place	9,953	9,785	9,559	9,272	9,002	8,567	8,415	8,207	8,027	7,773
<b>WASTEWATER SYSTEM DATA*</b>										
Wastewater Customers Retail & Wholesale at End of Year	192,765	187,992	183,990	180,795	177,845	174,195	169,283	164,555	159,576	154,779
Average Daily Flow - Million Gallons	60.35	58.66	58.23	57.98	58.23	55.85	58.15	60.02	62.64	60.65
Maximum Daily Flow - Million Gallons	68.62	72.68	82.31	66.05	78.62	59.24	66.63	70.62	70.74	70.39
Minimum Daily Flow - Million Gallons	51.52	50.79	51.91	51.42	51.63	47.05	49.99	48.81	51.10	51.41
Average Daily Flow per Customer - Gallons	313	312	316	321	327	321	344	365	393	392
Miles of Wastewater Line Installed	30.00	37.00	32.24	29.73	28.00	26.10	53.64	38.68	22.00	36.00
Miles of Wastewater Line in Place	2,150	2,120	2,083	2,051	2,021	1,993	1,967	1,914	1,875	1,853

\*Calendar Year

**EL PASO WATER UTILITIES  
SELECTED FINANCIAL AND STATISTICAL DATA  
STORMWATER UTILITY**

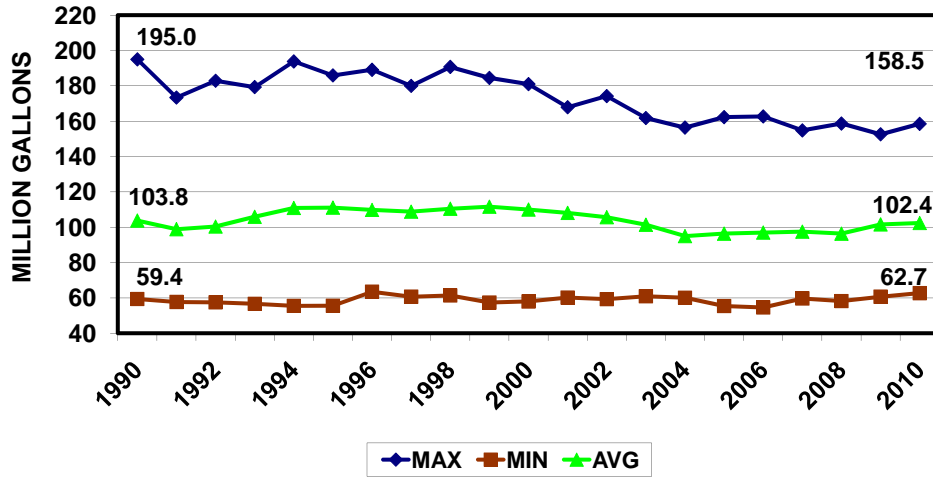
<b>FINANCIAL RATIOS*</b>	<b>2010</b>	<b>2009</b>
<b>Current Ratio (Current Assets/Current Liabilities)</b>	<b>32.03</b>	<b>5.40</b>
<b>Acid Test Ratio (Cash &amp; Cash Equivalents/Current Liabilities)</b>	<b>20.38</b>	<b>4.08</b>
<b>Operating Ratio (O&amp;M-depreciation/Total Operating Revenue)</b>	<b>0.47</b>	<b>0.43</b>
<b>Net Take-Down Ratio (Total Operating Income-O&amp;M)/Gross Revenue</b>	<b>0.52</b>	<b>0.56</b>
<b>Total Liabilities to Total Assets</b>	<b>0.60</b>	<b>0.03</b>

<b>OPERATIONS AND STATISTICAL DATA*</b>	<b>2010</b>	<b>2009</b>
<b>Number of ponds</b>	<b>325</b>	<b>277</b>
<b>Acres of ponds inventoried</b>	<b>904</b>	<b>983</b>
<b>Acres of ponds cleaned</b>	<b>900</b>	<b>3,429</b>
<b>Number of Dams/Basins</b>	<b>38</b>	<b>38</b>
<b>Acres of Dams/Basins inventoried</b>	<b>2,430</b>	<b>2,390</b>
<b>Acres of Dams/Basins cleaned</b>	<b>1,500</b>	<b>1,915</b>
<b>Miles of Channels inventoried</b>	<b>72</b>	<b>68</b>
<b>Miles of Channels cleaned</b>	<b>42</b>	<b>30</b>
<b>Miles of Agricultural Drains inventoried</b>	<b>43</b>	<b>39</b>
<b>Miles of Agricultural Drains cleaned</b>	<b>31</b>	<b>25</b>
<b>Miles of Drainage Conduits inventoried</b>	<b>146</b>	<b>100</b>
<b>Miles of Drainage Conduits cleaned</b>	<b>34</b>	<b>2</b>
<b>Drainage Inlets inventoried</b>	<b>6,000</b>	<b>4,100</b>

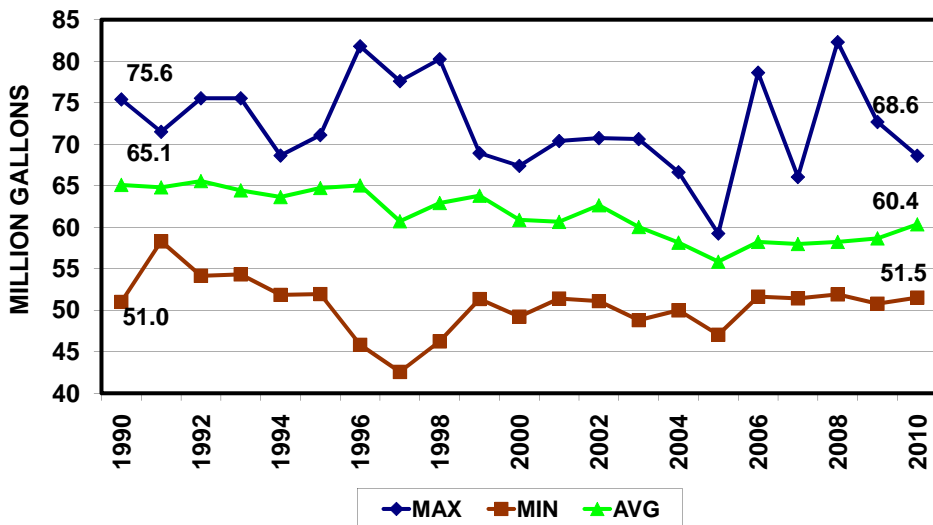
\*Fiscal year March 1 of year shown thru last day of February of following year

Note: Municipal Drainage Utility was created and started operations in fiscal year 2009

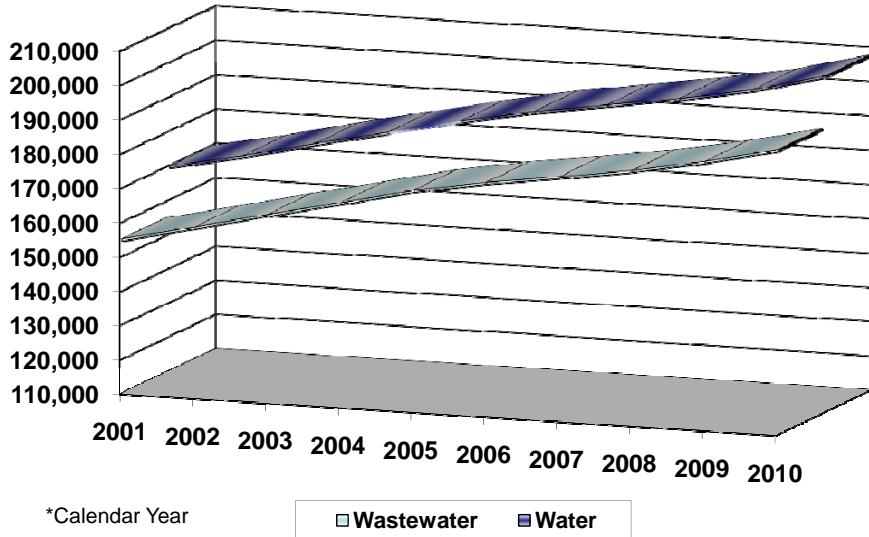
### MAXIMUM, MINIMUM, and AVERAGE WATER DEMAND



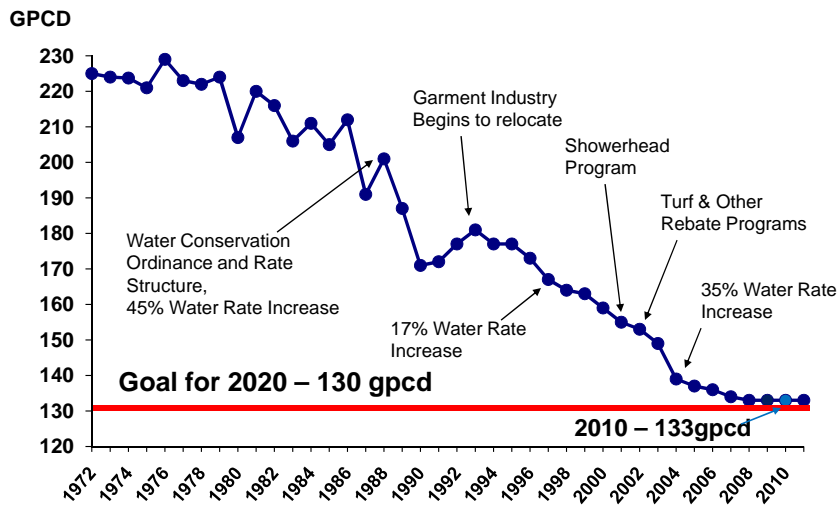
### MAXIMUM, MINIMUM, AND AVERAGE SEWER FLOWS



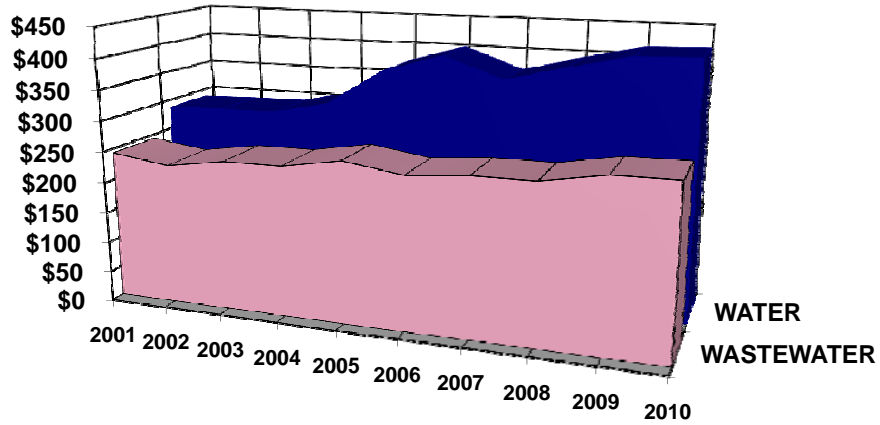
### WATER & WASTEWATER CUSTOMER GROWTH 10 Years\*



### PER CAPITA CONSUMPTION ALL EPWU CUSTOMERS

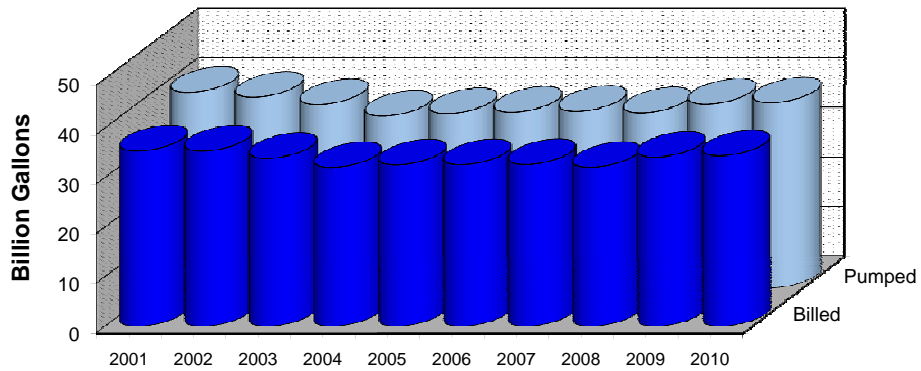


### AVERAGE ANNUAL WATER & WASTEWATER REVENUE PER CUSTOMER 10 Years\*



\* Fiscal Year - Ending February 28 of year shown.  
All Customers are included.

### WATER PUMPED vs. WATER BILLED



\*Calendar Year

**PUBLIC SERVICE BOARD - EL PASO WATER UTILITIES**  
**WATER AND WASTEWATER UTILITY FUND**

2001 thru 2010\*

Monthly Minimum Charge by Meter Size	WATER RATES									
	2010	2009	2008	2007	2006	2005	2004	2003	2002	2001
¾	4.79	4.79	4.48	4.31	4.31	4.31	4.10	3.73	3.59	3.50
1	7.46	7.46	6.97	6.70	6.70	6.70	6.38	5.80	5.58	5.44
1½	12.78	12.78	11.94	11.48	11.48	11.48	10.93	9.94	9.56	9.33
2	15.38	15.38	14.37	13.82	13.82	13.82	13.16	11.96	11.50	11.22
3	30.71	30.71	28.70	27.90	27.90	27.90	26.29	23.90	22.98	22.42
4	45.84	45.84	42.84	41.19	41.19	41.19	39.23	35.66	34.29	33.45
6	69.51	69.51	64.96	62.46	62.46	62.46	59.49	54.08	52.00	50.73
8	119.07	119.07	111.28	107.00	107.00	107.00	101.90	92.64	89.08	86.91
<b>Volume Charges</b>										
<u>Residential Customers</u>										
Block 1 - Over 4ccfs - 150% of AWC*									0.82	0.80
Block 2 - 150% - 300% of AWC									1.52	1.48
Block 3 - over 300% of AWC **									1.90	1.85
<u>Residential Customers</u>										
Block 1 - Over 4ccfs - 150% of AWC*	1.45	1.45	1.22	1.17	1.17	1.17	0.94	0.85		
Block 2 - 150% - 250% of AWC	3.40	3.40	3.40	3.27	3.27	3.27	1.77	1.61		
Block 3 - over 250% of AWC **	4.87	4.87	4.87	4.68	4.68	4.68	2.28	2.07		
<u>Non Residential Customers</u>										
Block 1 - 150% of AWC*									0.82	0.80
Block 2 - 150% - 300% of AWC									1.52	1.48
Block 3 - over 300% of AWC **									1.90	1.85
<u>Non Residential Customers</u>										
Block 1 - 150% of AWC*	1.45	1.45	1.22	1.17	1.17	1.17	0.94	0.85		
Block 2 - 150% - 250% of AWC	3.40	3.40	3.40	3.27	3.27	3.27	1.77	1.61		
Block 3 - over 250% of AWC **	4.87	4.87	4.87	4.68	4.68	4.68	2.28	2.07		
<u>Water Supply Replacement Charge</u>										
Meter Size										
¾	5.91	5.91	5.91	5.68	5.68	5.68	4.36	3.96	3.81	3.81
1	14.77	14.77	14.77	14.20	14.20	14.20	10.90	9.91	9.53	9.53
1½	29.53	29.53	29.53	28.39	28.39	28.39	21.79	19.81	19.05	19.05
2	47.25	47.25	47.25	45.43	45.43	45.43	34.87	31.70	30.48	30.48
3	94.48	94.48	94.48	90.85	90.85	90.85	69.74	63.40	60.96	60.96
4	147.64	147.64	147.67	141.96	141.96	141.96	108.97	99.06	95.25	95.25
6	295.27	295.27	295.27	283.91	283.91	283.91	217.93	198.12	190.50	190.50
8	549.19	549.19	549.19	528.07	528.07	528.07	405.35	368.50	354.33	354.33
Rate Increase (By Design)	0.0%	7.0%	4.0%	0.0%	0.0%	35.0%	10.0%	9.0%	2.5%	10.0%

\* Fiscal year March 1 thru last day of February

**PUBLIC SERVICE BOARD - EL PASO WATER UTILITIES**  
**WATER AND WASTEWATER UTILITY FUND**

2001 thru 2010\*

<u>Residential</u>										
Monthly Minimum Charge by Meter Size	WASTEWATER RATES									
	2010	2009	2008	2007	2006	2005	2004	2003	2002	2001
Less than 1	10.11	10.11	9.45	9.09	9.09	9.09	8.42	7.80	7.16	6.53
1	23.24	23.24	21.72	20.88	20.88	20.88	19.33	17.90	16.42	14.97
1½	49.48	49.48	46.24	44.46	44.46	44.46	41.17	38.12	34.97	31.89
2	62.24	62.24	58.17	55.93	55.93	55.93	51.79	47.95	43.99	40.11
3	137.61	137.61	128.61	123.66	123.66	123.66	114.50	106.02	97.27	88.69
4	211.95	211.95	198.08	190.46	190.46	190.46	176.35	163.29	149.81	136.60
6	328.28	328.28	306.80	295.00	295.00	295.00	273.15	252.92	232.04	211.57
8	572.04	572.04	534.62	514.06	514.06	514.06	475.98	440.72	404.33	368.66
Volume Charges										
<u>Residential Customers</u>										
Over 4 ccfs - 90% of Average Winter Consumption	1.27	1.19	1.14	1.14	1.14	1.06	0.98	0.90	0.88	0.82
<u>Non Residential Customers</u>										
90% of Average Winter Consumption	1.27	1.19	1.14	1.14	1.14	1.06	0.98	0.90	0.88	0.82
Rate Increase (By Design)	0.0%	4.0%	0.0%	0.0%	8.0%	8.0%	9.0%	2.5%	7.0%	0.0%

\* Fiscal year March 1 thru last day of February